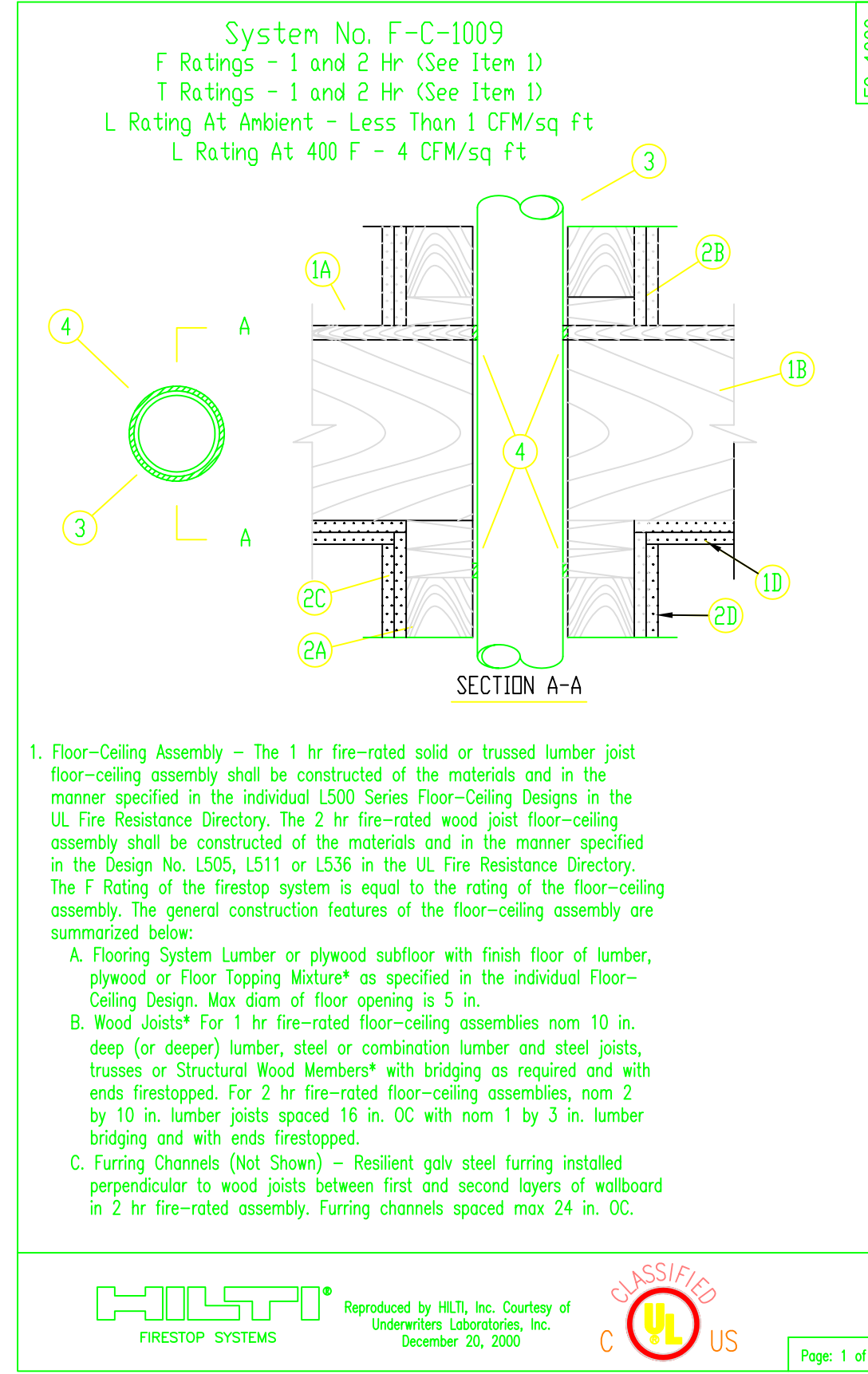


PIPING NOTES

- HANG ALL NEW PIPE 1" TO 1 1/2" IN SIZE 8" - 9" ABOVE FINISH FLOOR (SEE PLAN FOR ELEVATIONS) FROM WOOD STRUCTURE WITH HANGER #1 AND #2
- HANG ALL PIPE 2 - 1 1/2" IN SIZE 8" - 4" ABOVE FINISH FLOOR (SEE PLAN FOR ELEVATIONS) FROM WOOD STRUCTURE WITH HANGER #2 AND #12

ALL ARM-OVERS OVER 24' TO HAVE A HANGER

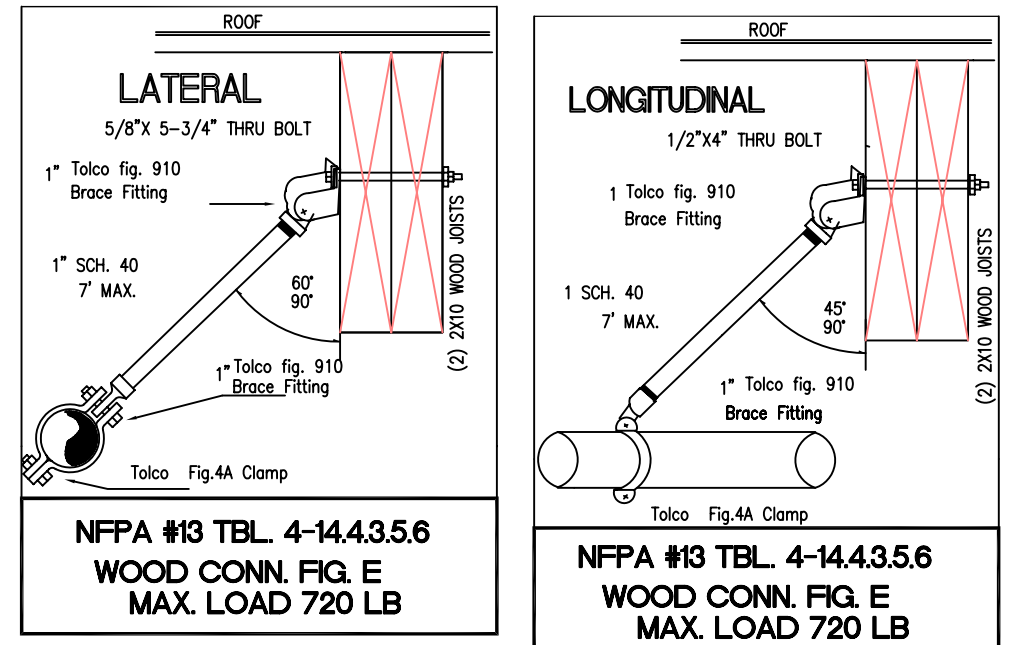
SEE FP-1 FOR HANGER DETAILS AND GENERAL NOTES



System No. F-C-1009
 F Ratings - 1 and 2 Hr (See Item 1)
 T Ratings - 1 and 2 Hr (See Item 1)
 L Rating At Ambient - Less Than 1 CFM/sq ft
 L Rating At 400 F - 4 CFM/sq ft

- Floor-Ceiling Assembly - The 1 hr fire-rated solid or trussed lumber joist floor-ceiling assembly shall be constructed of the materials and in the manner specified in the individual UL50 Series Floor-Ceiling designs in the UL Fire Resistance Directory. The 2 hr fire-rated wood joist floor-ceiling assembly shall be constructed of the materials and in the manner specified in the individual UL50 Series Wall and Partition designs in the UL Fire Resistance Directory and shall include the following construction features:
 A. Slats Nom 2 by 6 in. or double nom 2 by 4 in. lumber slats.
 B. Side Plate Nom 2 by 6 in. or parallel 2 by 4 in. lumber plates, lightly butted.
 C. Top Plate The double top plate shall consist of two nom 2 by 6 in. or two sets of parallel 2 by 4 in. lumber plates, lightly butted.
 D. Gypsum Board Thickness, type, number of layers and fasteners shall be as specified in individual Wall and Partition Design.
- Through Penetrants - One metallic pipe, conduit or tubing to be installed within the firestop system. Pipe, conduit or tubing to be rigidly supported on both sides of floor assembly. An annular space of min 1/8 in. to max 3/4 in. is required within the firestop system. The following types and sizes of metallic pipes or conduits may be used:
 A. Steel Pipe Nom 4 in. diam (or smaller) Schedule 10 (or heavier) steel pipe.
 B. Iron Pipe Nom 4 in. diam (or smaller) cast or ductile iron pipe.
 C. Conduit Nom 4 in. diam (or smaller) steel electrical metallic tubing or steel conduit.
 D. Copper Tubing Nom 4 in. diam (or smaller) Type L (or heavier) copper tubing.
 E. Copper Pipe Nom 4 in. diam (or smaller) Regular (or heavier) copper pipe.
- Fill, Void or Cavity Material - Sealant - Min 3/4 in. thickness of fill material applied within the annulus, flush with top surface of floor. A generous bead of fill material also applied within the annulus of the top plate, flush with bottom surface of lower top plate.

HLL CONSTRUCTION CHEMICALS, DIV OF HLL, INC. - CP9015, CP9016 or FS-One Sealant (Note: L Ratings apply only when FS-One Sealant is used)
 *Bearing the UL Classification Marking



BRACING CALCULATION ZONE OF INFLUENCE METHOD FOR 4" PIPE

LONGITUDINAL
 50' OF 4" PIPE EDDY-FLOW
 65.98 LB/FT = 299.4 LB

REVISIONS

NO.	DATE	DESCRIPTION
1	02/23/04	GENERAL CORRECTIONS REQUIRED BY NEWMON BROWN - FIRE PROTECTION PLANS EXAMINER

SYM	DN1	NAME	METAL	TEMP	TR	NPT	DRIF	WPC	MODEL#	ESDUT
104	UPR	BRASS	200	4.24	1/2"	1/2"	RELIABL	FIFR		CONCEALED
65	PEND	WHITE	155	4.90	1/2"	1/16	RELIABL	FIFR549	COF	CONCEALED
30	PEND	WHITE	155	5.62	1/2"	1/2	RELIABL	FIFR		RECESSED
16	PEND	CHROME	200	5.62	1/2"	1/2	RELIABL	FIFR		2-PIECE 401
13	UPR	BRASS	200	4.24	1/2"	1/16	RELIABL	FIFR		RECESSED
1	UPR	BRASS	200	5.62	1/2"	1/2	RELIABL	FIFR		RECESSED
22	UPR	BRASS	200	4.24	1/2"	1/16	RELIABL	FIFR		RECESSED
22	PEND	CHROME	200	5.62	1/2"	1/2	RELIABL	FIFR		2-PIECE 401

TOTAL HEADS THIS PAGE 276
 TOTAL HEADS ENTIRE JOB 739

SCALE: 1/8" = 1'-0"

DATE: 02-23-04 TIME: 17:11:14
 FILE: FP-2.dwg

FIRE SPRINKLERS

PROJECT: HOTEL
 ADDRESS: CITY
 TITLE: FIRST FLOOR PIPING PLAN AND REFLECTED CEILING
 DRAWN: W Y DATE: --
 W Y FIRE SPRINKLER DESIGN SERVICES
 DRAWING NO: FP-2
 OF SHEETS: --