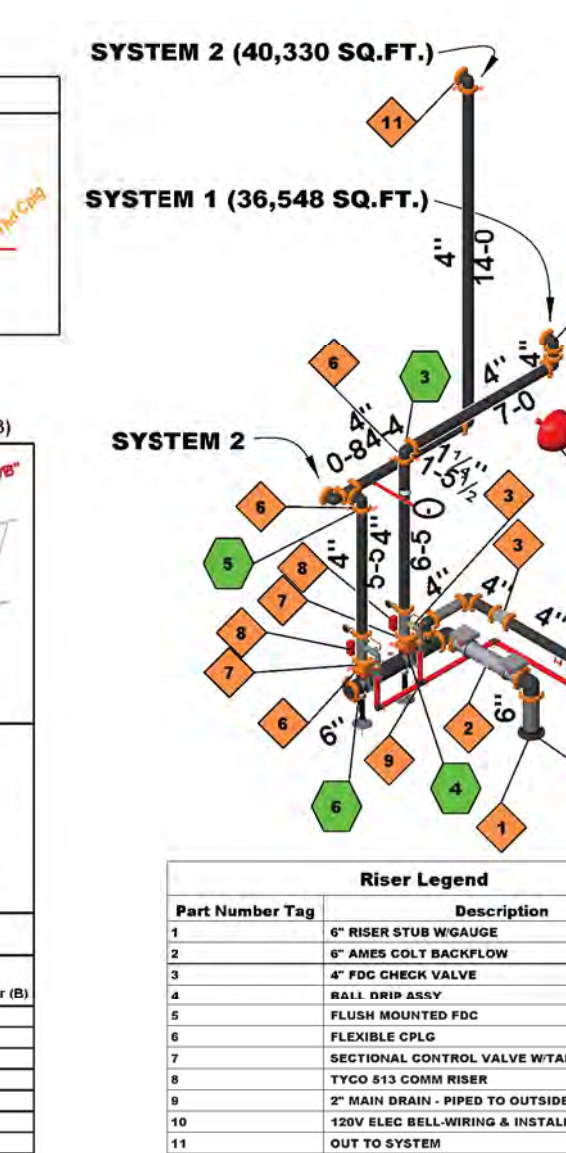
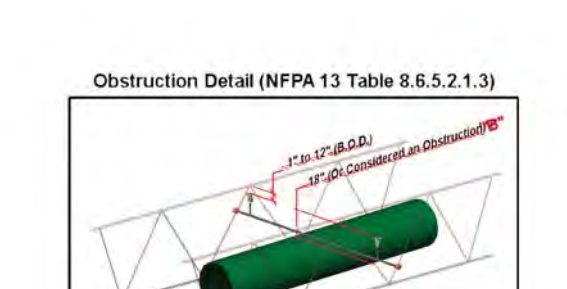
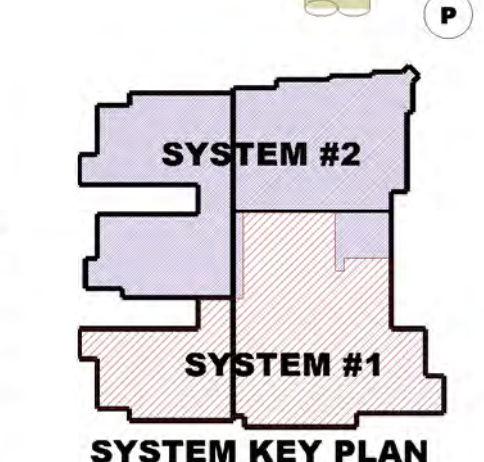
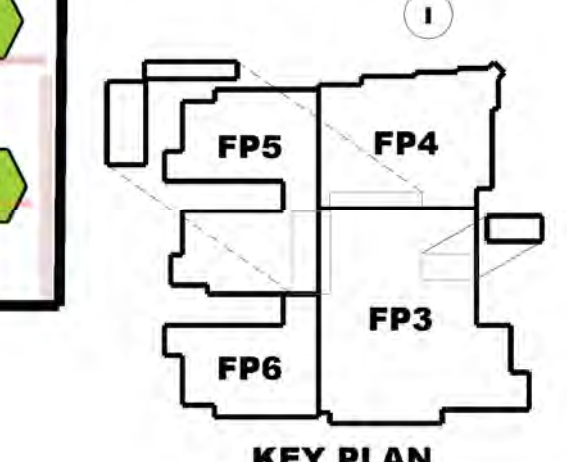
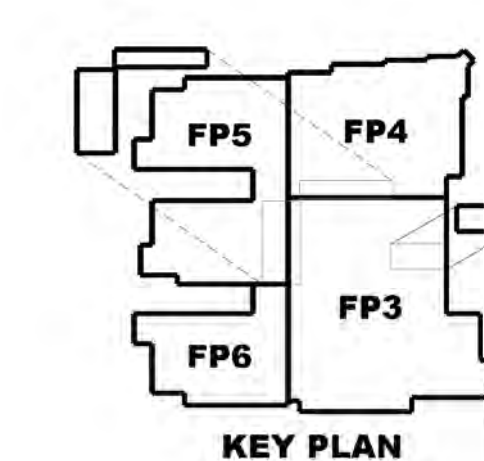
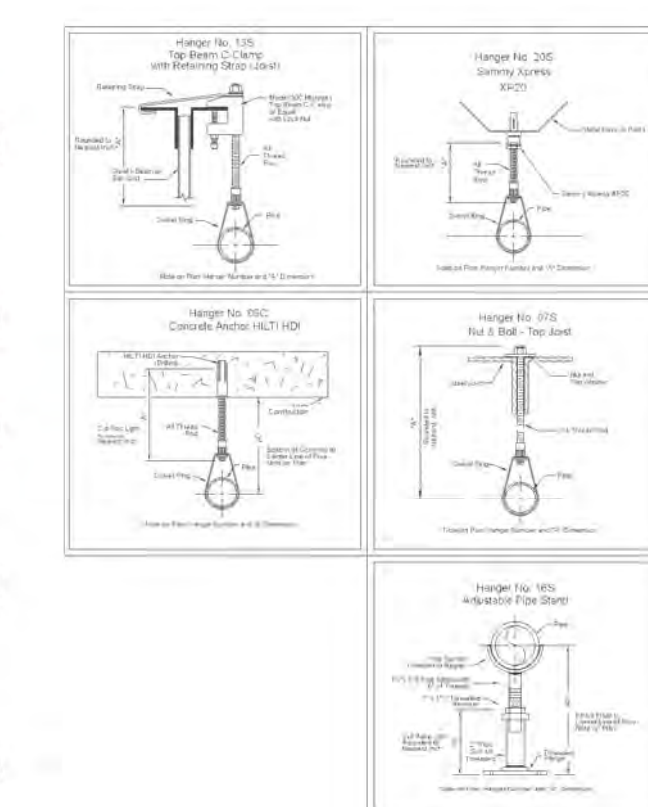
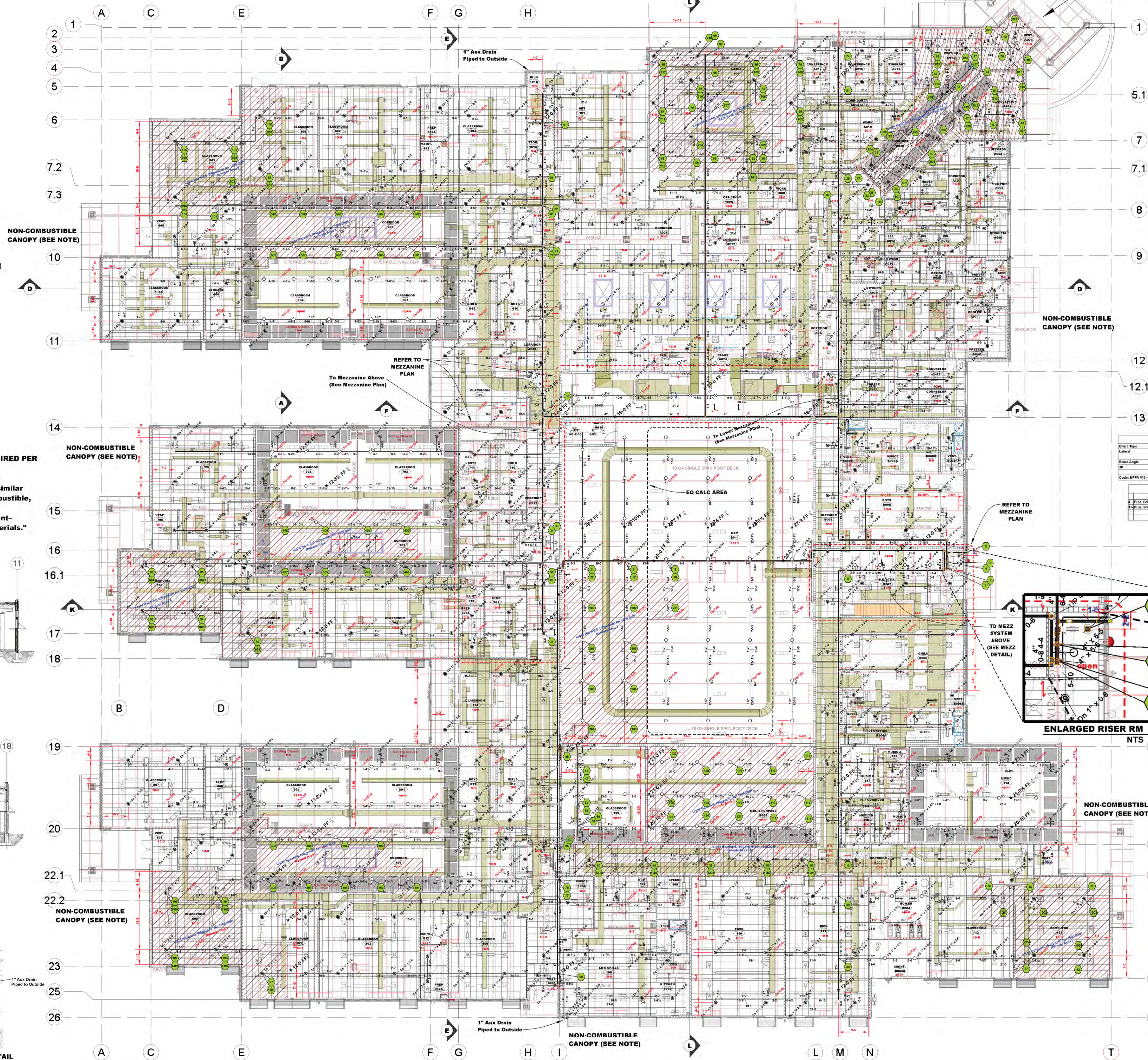
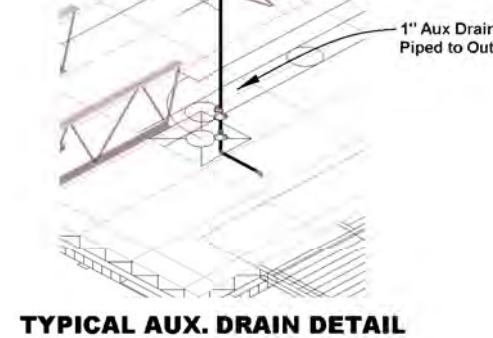
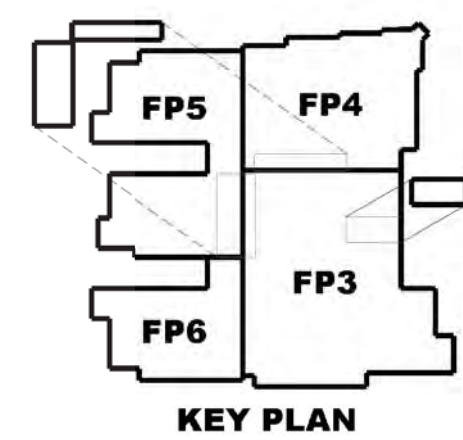
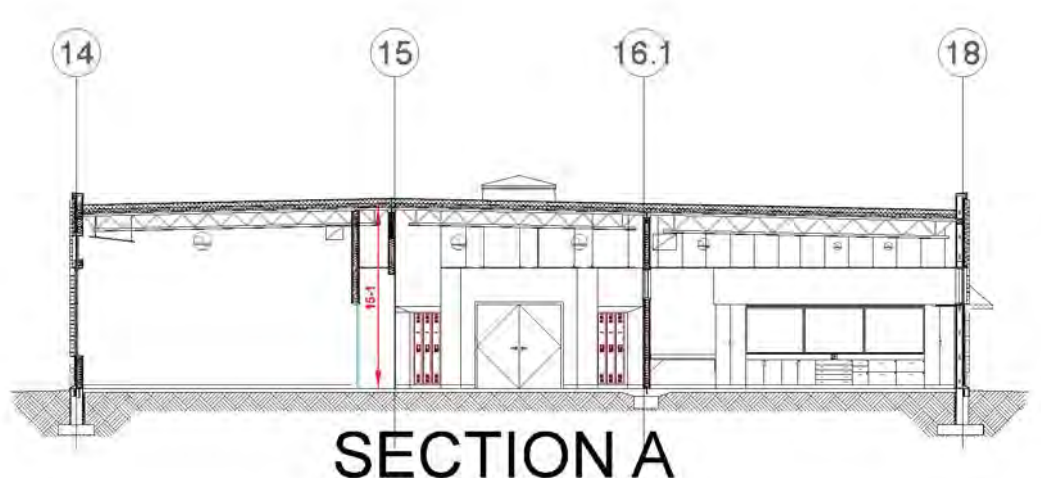
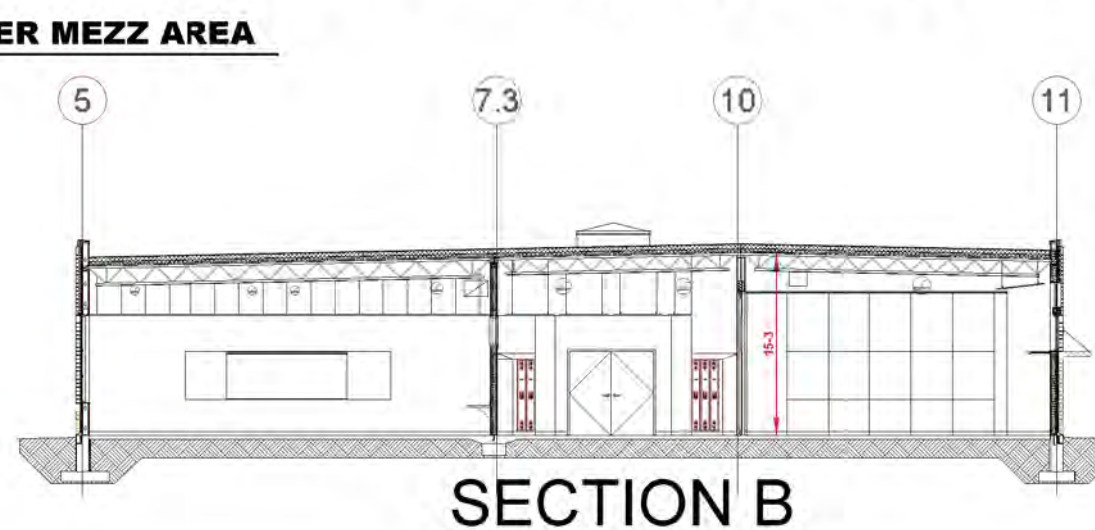


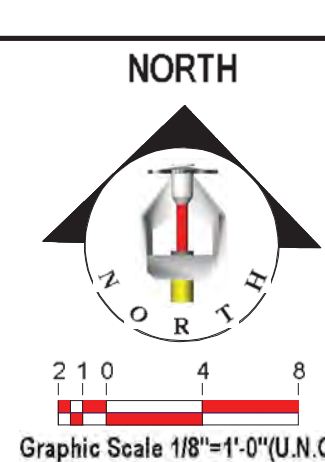
**"Sprinklers shall be permitted to be omitted where the canopies, roofs, porte-cochères, balconies, decks, or similar projections are constructed with materials that are noncombustible, limited-combustible, or fire retardant-treated wood as defined in NFPA 703, Standard for Fire Retardant-Treated Wood and Fire-Retardant Coatings for Building Materials."**






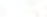







Horiz. Distance From Outside edge of Obstruction (A)	Min. Vertical Distance from Deflector (B)
6" or less	3"
More than 6" to 9"	4"
More than 9" to 12"	6"
More than 12" to 15"	8"
More than 15" to 18"	9.5"
More than 18" to 24"	12.5"
More than 24" to 30"	15.5"

Riser Legend	
Part Number Tag	Description
1	4" RISER STUB W/ GUSE
2	6" AMES COLT BACKFLOW
3	4" FOG CHECK VALVE
4	BALL DRIP ASSY
5	FLUSH MOUNTED FOG
6	FLEXIBLE CPLG
7	SECTIONAL CONTROL VALVE W/TA
8	TYCO B13 COMM RISER
9	2" MAIN DRAIN - PIPES TO OUTSIDE
10	120V ELEC BELL-WIRING & INSTAL
11	OUT TO SYSTEM








## OVERALL PLAN








Standard Symbols	
	- Post Indicator Valve
	- Key Operated Valve
	- Public Hydrant
	- Fire Dept. Connection
	- O.S.&Y. Gate Valve
	- Check Valve
	- New Underground
	- Existing Underground

	Standard Symbols
ive	 - Alarm Check Valve
ive	 - Thrust Block
ction	 - Backflow Preventer
ive	
d	
ound	

### Standard Sprinkler Symbols

	- Upright on 1/2" Outlet
	- Pendent on 1/2" Outlet
	- Upright on 1" Spring
	- Pendent below ceiling on 1" Drop
	- Upright above Pendent on 1" Drop
	- Sidewall on 1/2" Outlet
	- Sidewall on 1" Spring

GENERAL SYSTEM NOTES	
1. HYDRAULIC INFORMATION TO BE PROVIDED ON SPINLER HEAD.	7. SYSTEM DESIGN SHALL BE PER NFPA #13 AND PROJECT SPEC IF REQ'D.
2. EARLYWAKE BRACING TO BE PROVIDED PER NFPA 13	8. OTHERS TO PROVIDE PAINTING, WRING, FIRE EXTINGUISHERS, HYDRANTS, CITY CONNECTION, ROADWAY SIGNALS.
3. ALL INSPECTORS' TEST CONNECTIONS AND LOW POINT DRAINS TO BE PROVIDED PER NFPA 13.	9. SYSTEM MONITORING, U.N.D.
4. ALL CHARGERS TO MEET CURRENT NFPA 13 REQUIREMENTS (U.N.O.)	10. HYDRAULIC REFERENCE POINT.
5. LINE PIPING SHALL BE SCH. 80X1/4" SPRINKLER PIPE WITH WELDED OUTLETS, ROLL GROOVED THROUGH ENDS WITH GROOVED THROUGH FITTINGS.	11. ALL SYSTEM COMPONENTS SHALL BE L.S. LISTED AND F.A. APPROVED.
6. MAIN PIPING SHALL BE SCH. 80X1/4" THINWALL (U.N.O.) WITH WELDED OUTLETS, ROLL GROOVED ENDS AND GROOVED FITTINGS.	12. SPARE HEAD CAPABILITY TO INCLUDE: (1) AND HEADS EACH WITH WRING AND COPY OF NFPA 25

Sprinkler Legend								
Symbol	Manufacturer	SIN/Model	Quantity	K-Factor	Type	Orifice/Finish	Temperature	Note
	Globe Fire Sprinkler Corp	RL1805	375	8.1/Pendent	1"	1/2" Chrome	155°F	
	Globe Fire Sprinkler Corp	GL5615	191	5.6/Upright	1"	1/2" Chrome	155°F	
	Globe Fire Sprinkler Corp	GL5601	4	8.1/Pendent	1"	1/2" Chrome	155°F	
	Globe Fire Sprinkler Corp	GL5680	2	5.6/Pendent	1"	1/2" Bronze	200°F	DRY SFP
	Globe Fire Sprinkler Corp	GL5615	46	5.6/Upright	1"	1/2" Bronze	200°F	
			Total = 655					

--	--